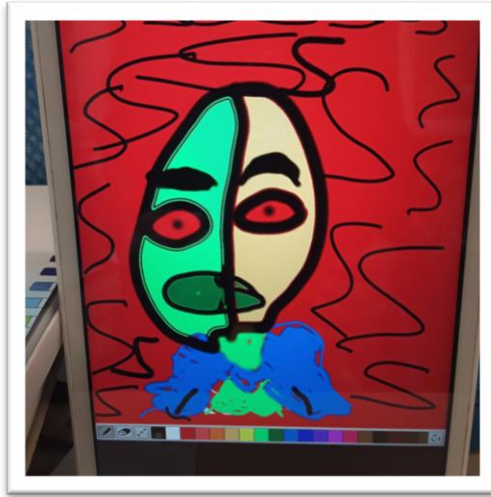


# Weekly Word

2.10.2020



To all Parents/Carers,

Some great photos this week of children learning and having fun in the classroom! On the left, in Y3, the children have been learning about different types of teeth. In Y2, children have been using the Samsung tablets to create their own versions of Picasso and on the right Y6 have been learning all about Darwin's finches! They even had a tweet from the Galapagos Conservation Trust!

In other news, the Recovery Curriculum survey is now closed and the results are as follows (based on 70 results):

**1. My child is happy after returning to school**

*37% of respondents agreed with this and 60% of respondents strongly agreed with this (97% in total)*

**2. My child feels safe in school**

*40% of respondents agreed with this and 59% of respondents strongly agreed with this (99% in total)*

**3. I feel school has prioritised my child's mental wellbeing during their return to school**

*53% of respondents agreed with this and 43% of respondents strongly agreed with this (96% in total)*

**4. My child has experienced some learning outdoors since they have returned to school**

*79% of respondents said yes (although that figure may now have increased).*

**5. My child feels they have someone to talk to in school if they have any worries or concerns about being back at school**

*60% of respondents agreed with this and 36% of respondents strongly agreed with this (96% in total)*

**6. My child has been given opportunities to reconnect with their friends**

*41% of respondents agreed with this and 59% of respondents strongly agreed with this (100% in total)*

We are really pleased with the results and continue to work with children and families who need that little bit of extra support.

Our Computing Team have also been working hard to reset passwords and get children all set up with Microsoft Teams. Please make sure that you and your child remember the passwords as resetting a large number of them at the same time is very tricky!!

And finally, our new drop off times go 'live' next Monday (5.10.2020). They are as follows:

- **Reception:** 8:40am
- **Y1 and Y2:** 8:50am
- **Y3 and Y4:** 9:00am
- **Y5 and Y6:** 9:10am

**\*Normal entrances and exits into school still apply\***

Take care and have a lovely weekend,

Mr I. Johnson