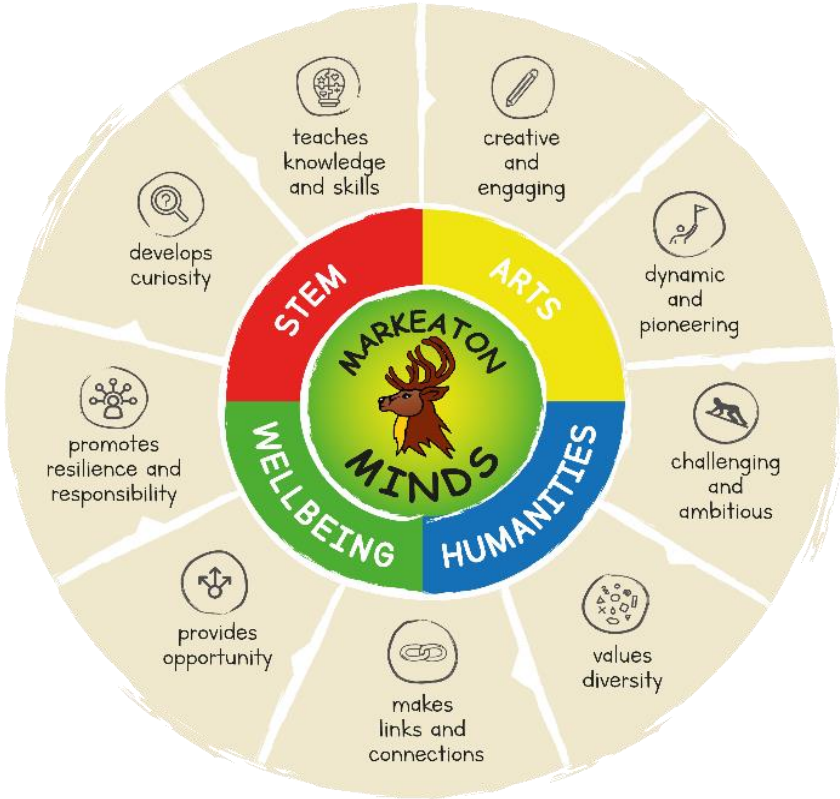


ACTION PLAN 2022-24

Date:	7.9.2022	Subject/Focus Area:	Trauma and attachment	Completed by:	Headteacher, SENCO and Pastoral lead	
Links to Whole School Development Priorities (please tick the last column to show which priority your subject targets link to)	1. To further enhance continuous provision across FS2 and Y1					x
	2. To develop and embed the use of technology					
	3. To improve progress in Writing and Maths from Y2 to Y6					
	4. To design and deliver a program of CPD to subject leaders from local schools					x



Targets <i>(please highlight any targets which strengthen the connectivity of the curriculum)</i>	Implementation <i>How are we going to do it?</i>					Impact <i>What will be the impact and how will we know?</i>	
Objective	Action(s)	Staff	Resources (costs if applicable)	Start date	End date	Success criteria	Monitoring
For all staff to receive ongoing training on trauma and attachment over a two year period.	All staff to complete twilight x 2 sessions on trauma and attachment	HG/EB		Oct 22	July 24	All staff to complete training and to now have some basic knowledge on behaviours related to attachment and trauma and how to deal with them in the classroom and school environment. Incidents of behaviour will be managed in a more uniform style across the school.	EB/MB/IJ
Children with trauma and in need of emotional regulation will have a Team around the Child Plan.	Create Team around the Child Plans where applicable (have up to four named adults who will be involved with any incident). Share these documents with staff.	EB/MB	N/A	Ongoing (reviewed at the beginning of each year)	All staff to be aware of individual need regarding behaviours and to follow the Team around the Child Plan.	EB/MB/IJ/class teachers	

<p>Ongoing attendance at training/conferences around behaviour and attachment (including signing up to the Inclusion Charter)</p>	<p>Use the information from the conferences and attachment and trauma training to feed into new policy (see below)</p> <p>Training:</p> <ul style="list-style-type: none"> • 2022-23 'Behaviour, is there another way?' • 2023-24 'Behaviour – making it stick' 	<p>EB/MB/IJ/E E</p>	<p>£500 per year</p>	<p>Sept 22</p>	<p>July 24</p>	<p>Behaviour policy to be revised in line with training and adapted to individual school need.</p> <p>Improved attendance of vulnerable children</p>	<p>EB/EE/IJ</p>
<p>Create new Relationships and Behaviour Policy (including new suspensions and exclusions policy)</p>	<p>Gather feed back from all stakeholders regarding behaviour.</p> <p>Restorative Justice training with Mark Finnis (Autumn 2023)</p>			<p>July 2023</p>	<p>Oct 2023</p>		<p>EB/EE/IJ</p>