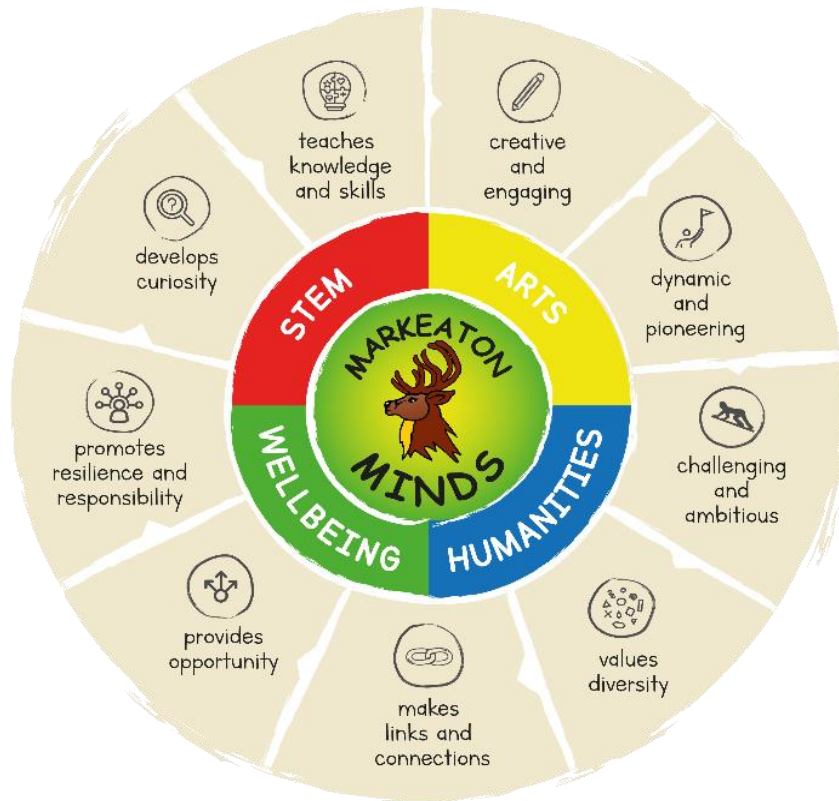


ACTION PLAN 2023-24

Date:	11/9/23	Subject/Focus Area:	RE	Completed by:	Sophie Payne
Links to Whole School Development Priorities (please tick the last column to show which priority your subject targets link to)	1. To further enhance continuous provision across FS2 and Y1				
	2. To develop and embed the use of technology				x
	3. To improve progress in Writing and Maths from Y2 to Y6				
	4. To design and deliver a program of CPD to subject leaders from local schools				x

Vision statement:

At Markeaton School we endeavour to nurture understanding, empathy and respect for cultures and religions in our community and of people throughout the world. We want the children at Markeaton to be enriched with high quality lessons, which are full of real-life experiences in order to develop awareness of others in the wider world. We aim to celebrate our similarities and differences by exploring with an open-minded attitude and understand the relevance and importance of religion in the 21st century. We promote a safe and inquisitive atmosphere which allows the children to develop their own personal philosophy and a passion for learning about other beliefs and religions.



Curriculum Family Target

To continue the use of trips and/or experiences to enhance the humanities provision.

Targets <i>(please highlight any targets which strengthen the connectivity of the curriculum)</i>	Implementation <i>How are we going to do it?</i>					Impact <i>What will be the impact and how will we know?</i>	
Objective	Action(s)	Staff	Resources (costs if applicable)	Start date	End date	Success criteria	Monitoring
To continue to monitor the consistent coverage and planning of the RE syllabus.	To ensure that the small steps are being displayed at the start of lessons – on the first page of the notebooks.	SP	½ day non-contact time	Sept 2023	July 2024	Small steps are being included on the planning. Planning scrutiny Key vocabulary in on the new spreadsheet.	SP ESH IJ
To ensure the lessons and resources used are of high quality and stored respectfully.	To ensure resource boxes are used in lessons regularly. SP to continue to organise the RE resources boxes and put pictures and lists of what is inside on the box. To perform a book look (and Showbie) to see the variety of lessons being taught and the resources being accessed. Are there any RE lessons being shown on Twitter?	SP	½ day non-contact time	Sept 2023	July 2024	RE resources boxes to be out in lessons and detailed on the planning. Pics to be taken for Showbie and X. Pics on X and Showbie. Planning scrutiny. Pupil voice.	SP ESH IJ
To ensure the use of technology to enhance	Look at how technology is used within RE and audit the cross curricular links.	SP Dept Leads	½ day non-contact time	Oct 2023	Sept 2024	The use of technology will be evident within RE both in planning and recorded work.	SP ESH IJ

the provision of RE across the school.	Enhance the use of Showbie for recording work within RE. Research and compile a list of technology to enhance RE.(onto spreadsheet)	TB	Curriculum spreadsheet Showbie			Showbie will be used during some RE projects to record/evaluate	
To meet with cluster school RE Leads and discuss and exchange art T and L strategies across schools.	Meet at least twice in the year with cluster school RE Leads. Join various online RE forums.		Room to meet Cluster Leads.	Sept 2023	July 2024	2 well attended meetings held. Feedback forms are positive and good practise shared. Personal RE knowledge developed.	SP ESH IJ
To use trips, visitors and experiences to encourage engagement and awe for children in RE.	Monitor and record what RE trips and experiences occur. Whole school e.g. Christingles Open the Book assemblies. Identify topics that could have more experiences and research possible ideas and experiences, particularly for y5/6.	SP	Cost of resources for Christingles - £100. Liaison with OTB team.	Sept 2023	July 2024	All classes do one trip a year to a religious place. Pics on Showbie/ X. Pupil voice. Risk assessments to be completed. SP to complete a whole school risk assessment for walking to St. Alkmunds.	SP ESH IJ

Support for Staff

- 2 x subject leader meetings at Markeaton with six local partner schools (Ridgeway, Ashgate, Redwood, Wren Park, Gayton Juniors and Parkview)
- 3 x Meetings per year with Emma Smith Holmes (Teaching and Learning Lead)
- 2 x Curriculum Family Meetings (1 x meeting to assist with Action Plans)
- Release Time throughout the year to carry out lesson visits, book looks, pupil interviews and planning scrutiny
- Links with Multi-Faith centre at University