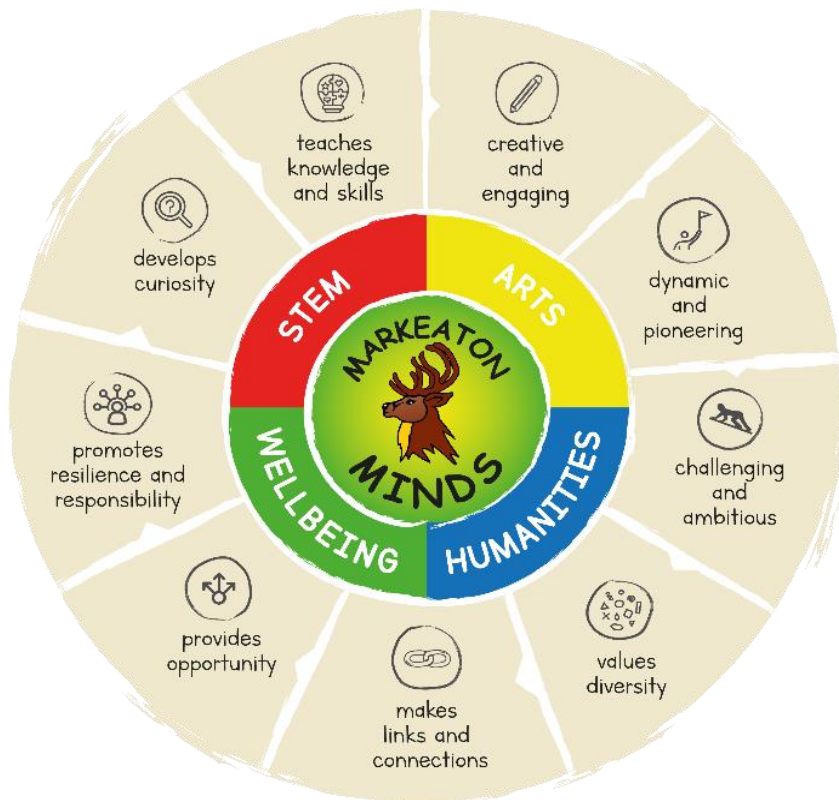


## ACTION PLAN 2023-24

<b>Date:</b>	11.9.23	<b>Subject/Focus Area:</b>	PSHE	<b>Completed by:</b>	IH, JS, DN, EB, MB	
<b>Links to Whole School Development Priorities (please tick the last column to show which priority your subject targets link to)</b>	1. To further enhance continuous provision across FS2 and Y1					
	2. To develop and embed the use of technology across the curriculum					<b>x</b>
	3. To improve progress in Writing and Maths from Y2 to Y6					
	4. To design and deliver a program of CPD to subject leaders from local schools					



### Vision statement:

At Markeaton Primary School we aim for our pupils to be happy, polite and kind. We encourage children to respect each other and celebrate their differences. Within a modern, social culture, we hope to prepare children with the skills and resilience required to be confident and responsible citizens through the use of our Markeaton MINDS.

Alongside parents and carers, we aim to nurture the development of personal aspirations and to recognise their goals and potentials in life. By providing a safe environment for children, we encourage children to take risks and embrace failure or mistake making; celebrating the learning we can take from these.

Children's mental health is of paramount importance to us and we want children and parents and carers to know where and how to access appropriate help if it is needed.

## Curriculum Family Target

To promote awareness of physical and mental health and wellbeing across the curriculum.

Targets <i>(please highlight any targets which strengthen the connectivity of the curriculum)</i>	Implementation  <i>How are we going to do it?</i>					Impact  <i>What will be the impact and how will we know?</i>	
Objective	Action(s)	Staff	Resources (costs if applicable)	Start date	End date	Success criteria	Monitoring
Family target: To promote awareness of physical and mental health and wellbeing across the curriculum.	To incorporate brain break activities throughout the day, as appropriate.  Promoting mindfulness e.g breathing, regulation boxes (targeted individuals), meditation.	All	Regulation activities (lead by Pastoral Lead)  Cloud 9  Go Noodle	Sept 23	July 24	Children report more positive wellbeing feedback via children's questionnaires.  Parents/carers report similar feedback via pop-ins and questionnaires.	DN ESH IJ  Timetable  Photos/Twitter  Classroom observations  Staff meetings/feedback
Golden thread: To develop and embed the use of technology across the curriculum.	To make use of iPads/tablets to record/ upload activities within PSHE lessons (discussion/practical activities).  Making use of wellbeing websites such as <a href="#">Lanterns   Games   Health for</a>	All	iPads and tablets  Showbie  Team meeting to research age appropriate resources.	Sept 23	July 24	Lesson observations show regular use of tablet devices in lessons (including use of Showbie).  Regular use of apps to promote positive mental wellbeing observed in lessons.	DN ESH IJ  Showbie  Photos/Twitter

	<p><a href="#">Kids</a> during brain breaks/for regulation.</p> <p>Look into 'NHS- My Happy Mind.'</p>						
<p>To explore interactive resources for children, focusing on wellbeing/mental health. With the aim of incorporating within the weekly timetable.</p>	<p>Making use of wellbeing websites such as <a href="#">Lanterns   Games   Health for Kids</a> during brain breaks/for regulation.</p> <p>NHS- my happy mind.</p>	Wellbeing team	Team meeting to research age appropriate resources.	November 23	July 24	<p>Children report more positive wellbeing feedback via children's questionnaires.</p> <p>Parents/carers report similar feedback via pop-ins and questionnaires.</p>	<p>DN ESH IJ</p> <p>Staff meetings</p>

**Support for Staff**

- 2 x subject leader meetings at Markeaton with six local partner schools (Ridgeway, Ashgate, Redwood, Wren Park, Gayton Juniors and Parkview)
- 3 x Meetings per year with Emma Smith Holmes (Teaching and Learning Lead)
- 2 x Curriculum Family Meetings (1 x meeting to assist with Action Plans)
- Release Time throughout the year to carry out lesson visits, book looks, pupil interviews and planning scrutiny
- Hand over meeting with previous PSHE Lead
-