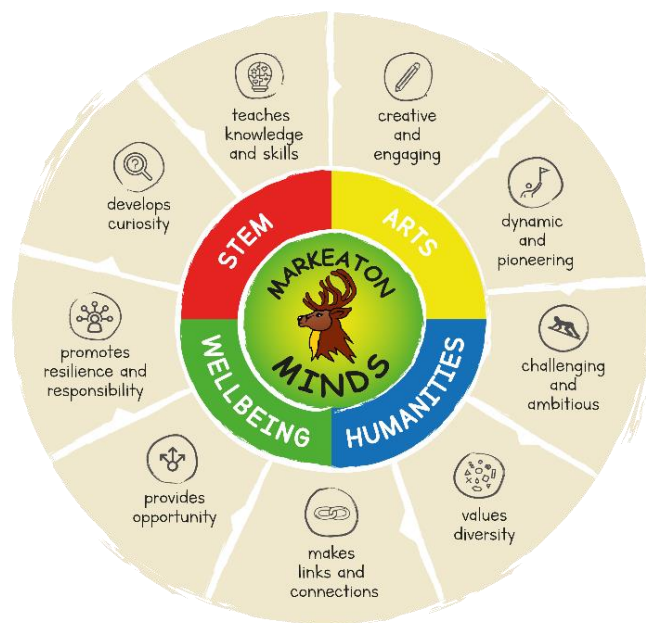


## CURRICULUM ACTION PLAN 2022-23

Date:	19-10-22	Subject/Focus Area:	PSHE	Completed by:	J Hawley (Wellbeing Team)
Links to Whole School Development Priorities (please tick the last column to show which priority your objectives link to)	To further develop how teachers plan and assess in *Foundation Subjects (*all taught subjects apart from Reading, Writing and Maths)				x
	Children from FS2 to Y6 to make at least good progress in targeted areas of Writing e.g. spelling				
	To improve whole school attendance and the attendance of identified groups of children across the school				
	To develop support, training and moderation opportunities for teaching staff with local partner schools				x



### Vision statement:

At Markeaton Primary School we aim for our pupils to be happy, polite and kind. We encourage children to respect each other and celebrate their differences. Within a modern, social culture, we hope to prepare children with the skills and resilience required to be confident and responsible citizens through the use of our Markeaton MINDS.

Alongside parents and carers, we aim to nurture the development of personal aspirations and to recognise their goals and potentials in life. By providing a safe environment for children, we encourage children to take risks and embrace failure or mistake making; celebrating the learning we can take from these.

Children's mental health is of paramount importance to us and we want children and parents and carers to know where and how to access appropriate help if it is needed.

### Curriculum Family Target

To provide enhanced wider opportunities for all children.

Targets <i>(please highlight any targets which strengthen the connectivity of the curriculum)</i>	Implementation  <i>How are we going to do it?</i>					Impact  <i>What will be the impact and how will we know?</i>	
Objective	Action(s)	Staff	Resources (costs if applicable)	Start date	End date	Success criteria	Monitoring
<b>Family Target</b> To provide enhanced wider opportunities for all children.	All teachers to run an extra-curriculum club for a half term p/a (ensure all year groups are given this opportunity FS2-Y6)  Wellbeing Curriculum Leaders to research and deliver enhanced wider opportunities that compliment the wellbeing curriculum e.g. assemblies, visitors, trips etc  Outside providers to deliver extra-curricular activities e.g. DCCT, YMCA	All		October '22	July '23	Clubs timetable in office to showcase enhanced wider opportunities  Mixture of lunch/after school clubs to ensure accessibility  Wider opportunities tracked on curriculum spreadsheet  Wider opportunities tracked on assembly rota	Club Timetable  Photos/Twitter  Curriculum spreadsheet  Assembly rota
To review and record PSHE assessment as part of a cycle.	Teaching staff Y1-Y6 briefed on how to assess PSHE (pre and post learning tasks)  New system of tracking (MAGS) for Foundation subjects to be finalised and completed by teaching staff after each unit of work	All	Management time covered internally	October '22	July '23	Pre and post learning tasks completed for each unit of work and displayed in books PSHE tracked on MAGS and reviewed by leader  Assessment data and coverage tracked by leader and strengths	Books  MAGS  Curriculum spreadsheet  Pupil Voice  Tapestry/Twitter

	Monitor coverage and progression of units from Y1-Y6	JH				and developments identified and acted upon	Planning
	Monitor coverage and progression in FS2 (Tapestry/Jigsaw)	JH				Coverage shown on curriculum spreadsheet	
To map out opportunities where the PSHE curriculum is applied in foundation subjects (topic) ensuring progression throughout the school.  e.g. celebration days, eco events, writing opportunities, trips, topics	On the New Curriculum Spreadsheet, record PSHE opportunities within foundation subjects with the help of phase leaders.	JH EE JS/VG/LC/KH	Management time covered internally	October '22	July '23	Evident on curriculum spreadsheet	Curriculum spreadsheet
	Review progression of these wider PSHE opportunities					Evidence in school calendar	Displays
	Share and disseminate documents staff					Evidence in planning	Planning
	Support and liaise with staff						Books
	Conduct a staff meeting for PSHE						Pupil Voice
							Tapestry/Twitter
Additional Notes							