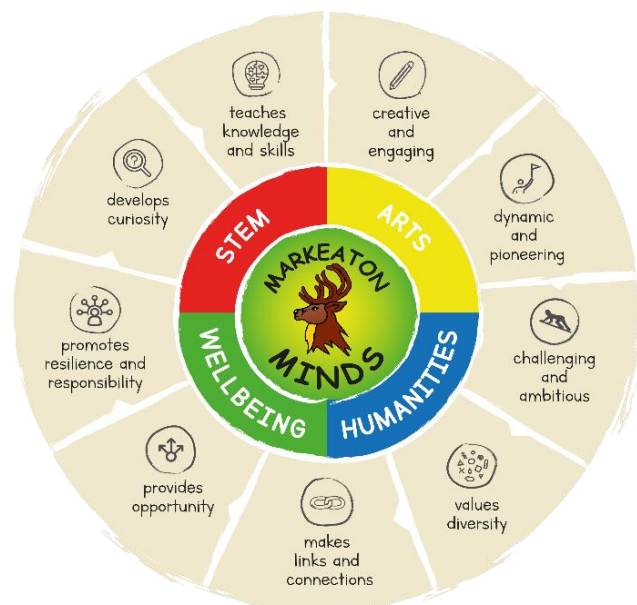


CURRICULUM ACTION PLAN 2022-23

Date:	19-10-22	Subject/Focus Area:	PE	Completed by:	Wellbeing Team
Links to Whole School Development Priorities (please tick the last column to show which priority your objectives link to)	To further develop how teachers plan and assess in *Foundation Subjects (*all taught subjects apart from Reading, Writing and Maths)				x
	Children from FS2 to Y6 to make at least good progress in targeted areas of Writing e.g. spelling				
	To improve whole school attendance and the attendance of identified groups of children across the school				
	To develop support, training and moderation opportunities for teaching staff with local partner schools				



Vision statement:

Sport is integral to a child's physical, mental and emotional development and as Platinum providers, we place high importance on this area of the curriculum. Indeed, at Markeaton, we teach children a variety of skills and techniques which can be built upon throughout their time with us; using a combination of teacher led lessons and bespoke coaching.

As a school, it is our intent that we will bring enjoyment and teach life skills through a wide and inclusive P.E. curriculum. We will help the children build a strong base of confidence, resilience and sportsmanship and allow them to express themselves via a range of sporting disciplines.

Through providing this wide range of sporting experiences, we will also encourage children to broaden their sporting horizons, endeavour to be their best and thrive to be confident in a safe, competitive environment - both in and out of school.

Curriculum Family Target

To provide enhanced wider opportunities for all children.

Targets <i>(please highlight any targets which strengthen the connectivity of the curriculum)</i>	Implementation <i>How are we going to do it?</i>					Impact <i>What will be the impact and how will we know?</i>	
Objective	Action(s)	Staff	Resources (costs if applicable)	Start date	End date	Success criteria	Monitoring
Family Target To provide enhanced wider opportunities for all children.	All teachers to run an extra-curriculum club for a half term p/a (ensure all year groups are given this opportunity FS2-Y6) Wellbeing Curriculum Leaders to research and deliver enhanced wider opportunities that compliment the wellbeing curriculum e.g. assemblies, visitors, trips etc Outside providers to deliver extra-curricular activities e.g. DCCT, YMCA	All		October '22	July '23	Clubs timetable in office to showcase enhanced wider opportunities Mixture of lunch/after school clubs to ensure accessibility Wider opportunities tracked on curriculum spreadsheet Wider opportunities tracked on assembly rota	Club Timetable Photos/Twitter Curriculum spreadsheet Assembly rota
To review and record PE assessment as part of a cycle.	Teaching staff Y1-Y6 briefed on how to assess PE (TBC-IJ) New system of tracking (MAGS) for Foundation subjects to be finalised and completed by teaching staff after each unit of work	IJ	Management time covered internally	October '22	July '23	PE tracked on MAGS and reviewed by leader IJ Assessment data and coverage tracked by leader and strengths and developments	MAGS Pupil Voice Tapestry/Twitter

						identified and acted upon	
To regularly communicate delivery and assessment expectations to outside providers.	<p>IJ to communicate teaching expectations to outside providers (DCCT/YMCA) as well as assessment expectations</p> <p>Phase leaders to ensure outside providers know which unit of work needs teaching in which term</p> <p>Training provided where need is identified</p> <p>Outside providers to use PE Pro scheme of work</p>	IJ/IH/EB	Management time covered internally	October '22	July '23	<p>Outside providers teach lessons in line with school expectations.</p> <p>Outside providers assess lessons in line with school expectations.</p>	<p>Lesson Looks</p> <p>Assessment data</p>
Additional Notes							
<p>Note- Health and Safety/Dress code to be consistent throughout the school.</p>							