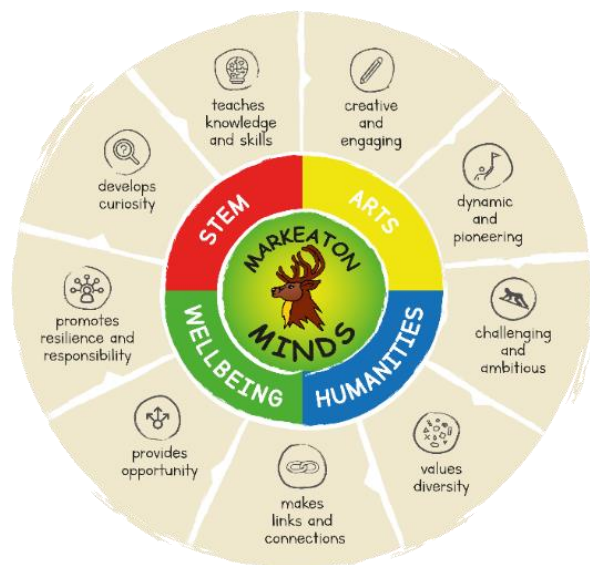


## CURRICULUM ACTION PLAN 2022-23

Date:	12.10.22	Subject/Focus Area:	MFL	Completed by:	A.Grogan
Links to Whole School Development Priorities (please tick the last column to show which priority your objectives link to)	To further develop how teachers plan and assess in *Foundation Subjects (*all taught subjects apart from Reading, Writing and Maths)				x
	Children from FS2 to Y6 to make at least good progress in targeted areas of Writing e.g. spelling				
	To improve whole school attendance and the attendance of identified groups of children across the school				
	To develop support, training and moderation opportunities for teaching staff with local partner schools				



### Vision statement:

Our vision is that children are exposed to a variety of languages from an early age, providing them with the confidence, ability and willingness to learn about other cultures.

During their time with us, we would like children to develop an appreciation and knowledge of foreign languages, in order to inspire and enable them to experiment with language when the opportunity presents itself.

Children will leave the school equipped with a knowledge of basic phrases, giving them the means and confidence to take the next steps on their linguistic journey.

### Curriculum Family Target

To continue and develop the use of trips and/or experiences to enhance the humanities provision.

Targets (please highlight any targets which strengthen the connectivity of the curriculum)	Implementation  How are we going to do it?					Impact  What will be the impact and how will we know?	
Objective	Action(s)	Staff	Resources (costs if applicable)	Start date	End date	Success criteria	Monitoring
<p>To continue and develop the use of trips and/or experiences to enhance the humanities provision.</p> <p>To continue to raise the profile of MFL across the whole school through exposure and experiences.</p>	<p>-Ensure vocab is consistently displayed in KS2 classrooms</p> <p>-Whole school MFL display</p> <p>-MFL assemblies</p> <p>-Languages day</p> <p>-Clubs (e.g French, Spanish)</p> <p>-International Mother Language Day (IMLD)</p>	AG	<p>Assembly time</p> <p>Space for clubs</p> <p>External agency for Language Day</p>	Sept 2022	July 2023	<p>- maintain whole school display</p> <p>-Ensure vocabulary is displayed in classrooms</p> <p>-Run whole school assemblies</p> <p>-Language Day in Summer term</p> <p>-Clubs in place</p> <p>-Spring lunchtime club for Y3 &amp;4 (AG)</p> <p>-International Mother Language Day Assembly (w.c 20.02.23)</p> <p>-provide examples of how MFL can be used in daily school life to staff in staff meeting</p> <p>-Encourage staff to tweet MFL related activities</p>	<p>-Learning walks</p> <p>-Liaise with club members</p> <p>-Tweets</p>
To regularly communicate delivery and assessment	To communicate teaching expectations to outside provider (PPA COVER LTD) as well as assessment expectations	AG  PPA Cover Ltd	PPA Cover Ltd costs	Sept 22	July 23	Outside providers teach lessons in line with school expectations.	<p>Lesson Looks</p> <p>Assessment data</p>

expectations to outside providers.	<p>Phase leaders to ensure outside providers know which unit of work needs teaching in which term</p> <p>Training provided where need is identified</p> <p>Check that outside planning is in line with Curriculum expectations at Markeaton.</p>					Outside providers assess lessons in line with school expectations.	
To ensure that all MFL objectives are covered by external agency and show progression across year groups	<p>-Create clear overview of overview showing objective coverage throughout KS2</p> <p>-Ensure clear progression of skills and knowledge throughout KS2 is clear</p>	AG	Non-contact time	Sept 2022	Jan 2023	<p>-clear objective overview showing progression available for all staff in New Curriculum Spreadsheet</p> <p>-Observe teaching of French taught by external agency (PPA Cover)</p> <p>-Explain overview in Staff Meeting</p>	<p>-Learning walks</p> <p>-Evidence in books</p> <p>-Pupil voice</p> <p>-Staff voice</p>
Ensure MFL is assessed effectively by external agency to clearly and accurately inform teaching staff.	-Set clear expectations of how MFL should be assessed by external agency	AG	Non-contact time	Sept 2022	Spring 2023	<p>-Share assessment expectations with external agency as soon as possible. Share these expectations with staff in time for reports (staff meeting slot)</p>	-Liaise with external agency staff on a termly basis

Additional Notes

--