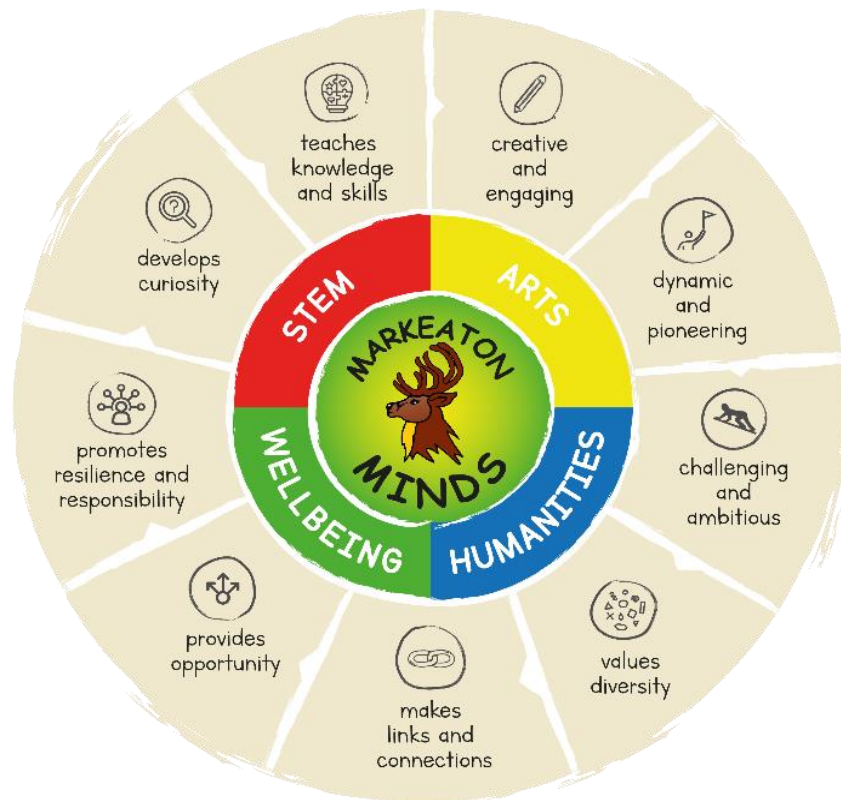


## ACTION PLAN 2023-24

<b>Date:</b>	11.9.23	<b>Subject/Focus Area:</b>	Geography	<b>Completed by:</b>	Humanities Team/ D Donnelly	
<b>Links to Whole School Development Priorities (please tick the last column to show which priority your subject targets link to)</b>	1. To further enhance continuous provision across FS2 and Y1					x
	2. To develop and embed the use of technology across the curriculum					x
	3. To improve progress in Writing and Maths from Y2 to Y6					
	4. To design and deliver a program of CPD to subject leaders from local schools					x



### Vision statement:

Throughout the school, the Geography curriculum places great emphasis on our place in the local community and the immediate environment. It is our intent that children will be able to identify and celebrate features in the locality and recognise the importance of Derby within the wider world.

We will challenge children to deepen their knowledge of this wider world by helping them to understand different environments, climates and populations and their global location.

Year on year, we will help children build upon previous geographical skills, knowledge and understanding of the world to ensure that children leave the school with a range of geographical skills and a confidence of Derby, their home city.

We hope that children leave Markeaton as curious young Geographers with an interest and inquisitiveness about the world around them.

### Curriculum Family Target

Use technology to enhance cross-curricular links within STEM subjects.

Targets <i>(please highlight any targets which strengthen the connectivity of the curriculum)</i>	Implementation  <i>How are we going to do it?</i>					Impact  <i>What will be the impact and how will we know?</i>	
Objective	Action(s)	Staff	Resources (costs if applicable)	Start date	End date	Success criteria	Monitoring
To promote the use of fieldwork across the school.	<p>Complete RGS fieldwork course (online) Inform staff about different resources that can be used to promote fieldwork from course</p> <p>Geography leader to look for opportunities to implement 1 fieldwork unit per year group into curriculum, to ensure that each phase at the very least is making the most of opportunities in the local area.</p> <p>To investigate (and if appropriate implement) the use Digimaps to help deliver this.</p>	DD	<p>Digimaps £109</p> <p>Cover (Internal where possible)</p>	Sept 23	July 24	Where possible teachers will select a unit of work to include fieldwork. This will be evident in books. It will provide children more opportunity to develop these fundamental geographical skills.	DD ESH IJ
To ensure the use of technology to enhance the provision of geography across the school.	<p>Review current use of technology within geography.</p> <p>Attend local network meetings (from FS2-Y6)</p>	DD/TB  DD/TB	Leadership time x1 day termly	September 2023	July 24	Staff will be confident using technology within science when appropriate.	DD ESH IJ

	Staff meeting to share technology in geography opportunities					The use of technology will be present in planning/ Showbie/ lesson looks.	
Review curriculum for KS2 in collaboration with Department Leads (½ day each)	Review the curriculum: Is the planning progressive? Does it build on key geographical skills? Does the curriculum work in its current form or do things need to be swapped? Are there opportunities to conduct fieldwork, even in the local area?	DD	½ day cover x2 October 2023 (Internal)	Sept 23	July 24	Curriculum progression and content discussed and has clarity and cohesion.  Each topic will have appropriate skills and knowledge	DD ESH IJ
<b>Additional Notes</b>							
<ul style="list-style-type: none"> <li>• 2 x subject leader meetings at Markeaton with six local partner schools (Ridgeway, Ashgate, Redwood, Wren Park, Gayton Juniors and Parkview)</li> <li>• 3 x Meetings per year with Emma Smith Holmes (Teaching and Learning Lead)</li> <li>• 2 x Curriculum Family Meetings (1 x meeting to assist with Action Plans)</li> <li>• Release Time throughout the year to carry out lesson visits, book looks, pupil interviews and planning scrutiny</li> <li>• Geographical Association subscription</li> <li>• Derby Research School Cluster meetings</li> </ul>							